



## “Better By Design”

### Traditional Single Sided Studded Penetration Fittings

#### TECHNICAL DATA SHEET



Traditional studded penetration fittings include a flexible back plate that seals on flat or curved surfaces up to 24” in diameter. These penetrations are secured with stainless 1/4-20 flange nuts on the sump interior. Boot material is an injection molded UV rubber. Assembly includes Series 300 all stainless clamps.

- 1 4 Stud penetrations are available in 3/4” and 1” rigid conduit sizes.
- 2 8 Stud penetrations are available for 1.5” OD pipes through 3” nominal pipe.
- 3 10 Stud penetrations are available for 3” nominal pipe through 5.0” OD pipe. 10 Stud penetrations are also used on corrugated chase pipe.
- 4 12 Stud penetrations are available for 5.2” OD through 6” nominal pipe.

Series 300 stainless clamps, stud seals and flange nuts are provided with each penetration fitting. Stud seals not applicable with 12 Stud penetration fitting.

*Dimensional Data and Product Numbers on Reverse*



Stainless Clamp

Stud Seals

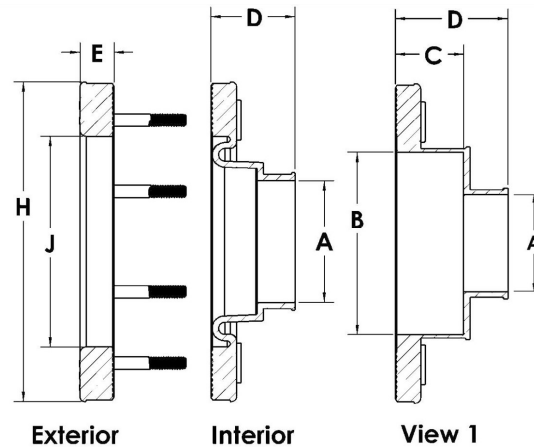
Flange Nuts

#### PRODUCTS USED ON THIS PROJECT

	Yes	No		
1	<input type="checkbox"/>	<input type="checkbox"/>	4 Stud Penetration Fitting	PF-T4S-_____
2	<input type="checkbox"/>	<input type="checkbox"/>	8 Stud Penetration Fitting	PF-T8S-_____
3	<input type="checkbox"/>	<input type="checkbox"/>	10 Stud Penetration Fitting	PF-T10S-_____
4	<input type="checkbox"/>	<input type="checkbox"/>	12 Stud Penetration Fitting	PF-T12S-_____



## Traditional Single Sided Studded Penetration Dimensional Data



Part Number	A	B	C	D	E	H	J
PF-T4S-1.1	1.200	N/A	N/A	1.625	0.250	4.467	3.282
PF-T4S-1.3	1.300	N/A	N/A	1.625	0.250	4.467	3.282
PF-T4S-1.4	1.390	N/A	N/A	1.625	0.250	4.467	3.282
PF-T4S-41	1.390	N/A	N/A	1.625	0.250	4.467	3.282
PF-T8S-1.5		N/A	N/A	1.625	0.250	6.375	5.282
PF-T8S-1.6	1.625	N/A	N/A	1.625	0.250	6.375	5.282
PF-T8S-1.7	1.725	N/A	N/A	1.625	0.250	6.375	5.282
PF-T8S-1.9	1.950	N/A	N/A	1.625	0.250	6.375	5.282
PF-T8S-2.0	2.050	N/A	N/A	1.625	0.250	6.375	5.282
PF-T8S-2.2	2.190	N/A	N/A	1.625	0.250	6.375	5.282
PF-T8S-2.4	2.450	N/A	N/A	1.625	0.250	6.375	5.282
PF-T8S-2.5	2.550	N/A	N/A	1.625	0.250	6.375	5.282
PF-T8S-2.7	2.725	N/A	N/A	1.625	0.250	6.375	5.282
PF-T8S-2.9	2.900	N/A	N/A	1.625	0.250	6.375	5.282
PF-T8S-3.0	3.030	N/A	N/A	1.625	0.250	6.375	5.282
PF-T8S-3.3	3.300	N/A	N/A	1.625	0.250	6.375	5.282
PF-T8S-3.6	3.600	N/A	N/A	1.625	0.250	6.375	5.282
PF-T10S-3.6	3.600	N/A	N/A	1.660	0.250	8.000	6.875
PF-T10S-3.8	3.800	N/A	N/A	1.660	0.250	8.000	6.875
PF-T10S-4.4	4.380	N/A	N/A	1.660	0.250	8.000	6.875
PF-T10S-4.5	4.550	N/A	N/A	1.660	0.250	8.000	6.875
PF-T10S-4.6x2.0	2.050	4.650	1.640	2.380	0.250	8.000	6.875
PF-T10S-4.6x2.5	2.550	4.650	1.640	2.380	0.250	8.000	6.875
PF-T10S-4.8	4.780	N/A	N/A	1.660	0.250	8.000	6.875
PF-T10S-5.0	5.050	N/A	N/A	1.660	0.250	8.000	6.875
PF-T12S-5.2	5.168	N/A	N/A	1.780	0.250	9.250	8.062
PF-T12S-6.3	6.350	N/A	N/A	1.780	0.250	9.250	8.062
PF-T12S-6.7	6.675	N/A	N/A	1.780	0.250	9.250	8.062

Amount of DBB V Bonder or DFE needed for coverage			Center to center dia. of ext plate stud holes		Hole Saw	
4 Stud Penetration Fitting		26 ml	4 stud	3.28	4 stud	2 1/4"
8 Stud Penetration Fitting		40 ml	8 stud	5.28	8 stud	4"
10 Stud Penetration Fitting		48 ml	10 stud	6.87	10 stud	5 1/2"
12 Stud Penetration Fitting		56 ml	12 stud	8.06	12 stud	6 7/8"